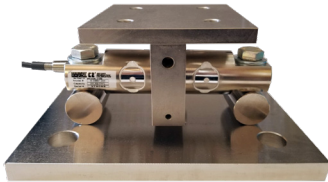


### Double Ended Shear Beams & Mounts



### HIDSB01 & HIDSB02 Load Sensors and HIDSBMT Mounts



The Hardy HIDSB01 and HIDSB02 Double Ended Shear Beam load cells are designed for use on medium to high capacity vessels. This series offers high accuracy and reliable performance with Hardy's industry leading C2 Electronic Calibration technology. Ideal for high capacity tanks and vessels, the HIDSB01 and HIDSB02 series are dependable workhorses suitable for heavy duty applications.

The load cells are either Stainless Steel (HIDSB01) or Alloy Steel (HIDSB02) construction. Both Stainless Steel and Nickel Plated Alloy Steel come in 5 klb to 200 klb (2.27 to 90.72 metric tons), with mounting hardware available separately. The sensors are oil proof, waterproof and non-corrosive, making them suitable for all kinds of environments. They have a protection rating of IP67. Both series come with a 9m (30 ft) cable.

SPECIFICATIONS	HIDSB01	HIDSB02
Capacities	5K, 10K, 20K, 40K, 50K, 60K, 100K, 150K, 200K	5K, 10K, 20K, 40K, 50K, 60K, 100K, 150K, 200K
Rated Output (ES)	3.0 mv/v ± 0.10%	3.0 mv/v ± 0.10%
Zero Balance	< ±1.0 % Rated Output	< ±1.0 % R.O.
Hysteresis	< 0.02% Full Scale	< 0.02% Full Scale
Non Linearity	< 0.03% Full Scale	< 0.03% Full Scale
Combined Error	< ±0.02% R.O.	< ±0.02% R.O.
Input Resistance	700 ± 7 ohm	700 ± 7 ohm
Output Resistance	703 ± 4 ohm	703 ± 4 ohm
Excitation	10VDC - Maximum 15VDC	10VDC - Maximum 15VDC
Safe Load Limit	150% Emax	150% Emax
Sensor Material	Stainless Steel 17-4PH	Nickel Plated Alloy Steel
Temperature - Compensated Range	0 - 150 deg. F	0 - 150 deg. F
Temperature - Effect on Zero	< 0.0011% FS 0/deg. F	< 0.0011% FS 0/deg. F
Sealing	Potted	Potted
Approvals	CE, IP67	CE, IP67
Warranty	Two years	Two years

All information and drawings on these pages are subject to change without notice. Consult website for latest specifications.

Hardy Process Solutions  
 10075 Mesa Rim Rd.  
 San Diego, CA 92121  
 tel. +1-858-292-2710  
 tel. +1 800-821-5831  
 fax +1-858-278-6700

C2 WIRE COLOR CODE FLAG LABEL IS FOUND APPROX. 10 IN. FROM END OF SENSOR'S CABLE

EXCITATION +	RED
EXCITATION -	BLACK
SIGNAL +	GREEN
SIGNAL -	WHITE
C2+	GRAY
C2 -	VIOLET
SHIELD	YELLOW

WARNING: NEVER cut load sensor cable

CABLE LENGTH 9 METERS

#### ORDERING INFORMATION

Shipping Weight is 5 lbs to 46 lbs for Sensors; 30 lbs to 270 lbs for mounts. For mounts, order SS for Stainless Steel and AS for Alloy Steel.

Capacity		Model#
klb	†*	HIDSB01 or HIDSB02
5 klb	2.27 †	HIDSB0_-5K†
10 klb	4.54 †	HIDSB0_-10K
15 klb	6.80 †	HIDSB0_-15K
20 klb	9.07 †	HIDSB0_-20K
30 klb	13.6 †	HIDSB0_-30K
40 klb	18.14 †	HIDSB0_-40K
50 klb	22.68 †	HIDSB0_-50K
60 klb	27.22 †	HIDSB0_-60K
100 klb	45.36 †	HIDSB0_-100K
150 klb	68.04 †	HIDSB0_-150K
200 klb	90.72 †	HIDSB0_-200K

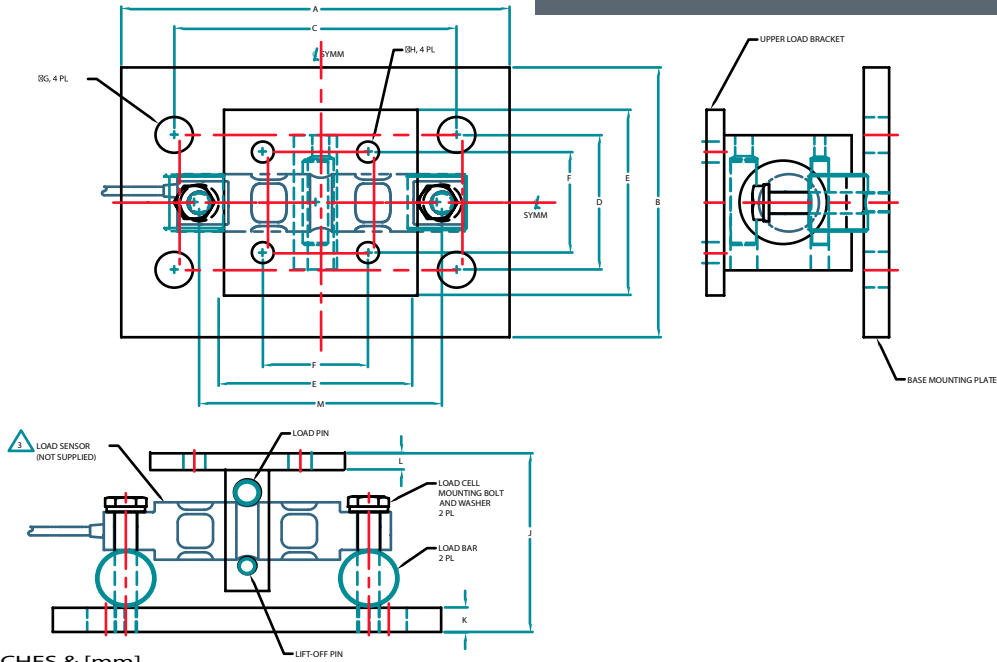
† Where \_ = 1 for Stainless Steel and 2 for Alloy Steel

HIDSBMT Mount capacity		Model#
klb	†*	Mount
5-20 klb	2.27 to 9.07 †	HIDSBMT-_S-5-20KLB**
30-75 klb	13.6 to 34.02 †	HIDSBMT-_S-30-75KLB
100 klb	45.36 †	HIDSBMT-_S-100KLB
150 klb	68.04 †	HIDSBMT-_S-150KLB
200-250 klb	90.72 to 113.4 †	HIDSBMT-_S-200-250KLB

\*\* Use SS for Stainless Steel, AS for Alloy Steel

\* Metric Tons estimated from lbs conversion.

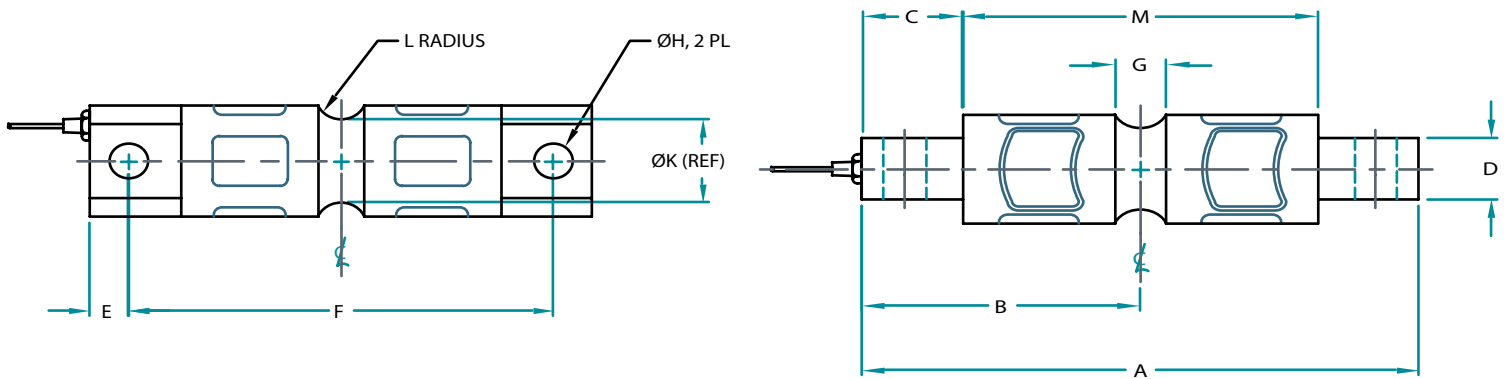
# HIDSBMT Double Ended Shear Beam Mount



DIMENSIONS- INCHES & [mm]

MOUNT MATERIAL	CAPACITY kibs [t]	A	B	C	D	E	F	ØG	ØH	J	K	L	M
STAINLESS STEEL MOUNT	5-20 kib [2.27 t-9.07 t]	11.00 [279.4]	8.00 [203.2]	8.00 [203.2]	4.00 [101.6]	5.50 [139.7]	3.00 [76.2]	1.06 [26.9]	.56 [14.2]	5.31 [134.9]	.75 [19.1]	.50 [12.7]	6.875 [174.63]
PLATED ALLOY STEEL MOUNT	5-20 kib [2.27 t-9.07 t]	11.00 [279.4]	7.00 [177.8]	8.00 [203.2]	4.00 [101.6]	5.50 [139.7]	3.00 [76.2]	1.06 [26.9]	.56 [14.2]	5.31 [134.9]	.75 [19.1]	.50 [12.7]	6.875 [174.63]
STAINLESS STEEL MOUNT AND PLATED ALLOY STEEL MOUNT	30-60 kib [13.61 t-27.22 t]	15.00 [381.0]	10.00 [254.0]	11.50 [292.1]	6.00 [152.4]	8.00 [203.2]	5.13 [130.3]	1.19 [30.2]	.69 [17.5]	8.43 [214.1]	1.00 [25.4]	.75 [19.1]	8.500 [215.9]
	100-150 kib [45.36 t-68.04 t]	18.00 [457.2]	12.00 [304.8]	14.00 [355.6]	9.00 [228.6]	10.00 [254.0]	7.50 [190.5]	1.38 [35.1]	.81 [20.6]	10.38 [263.7]	1.25 [31.8]	1.25 [31.8]	9.500 [241.3]
	200-250 kib [90.72 t-113.4 t]	26.00 [660.4]	12.00 [304.8]	20.00 [508.0]	6.00 [152.4]	12.00 [304.8]	9.00 [228.6]	1.88 [47.8]	1.06 [26.9]	16.75 [425.4]	2.00 [50.8]	2.00 [50.8]	13.000 [330.2]

# HIDSB01 & HIDSB02 Load Sensor



DIMENSIONS- INCHES & [mm]

CAPACITY LBS (KN)	MODEL NUMBER STAINLESS STEEL	MODEL NUMBER PLATED ALLOY STEEL	A	B	C	D	E	F	G	ØH	ØI	ØJ	ØK	L	M
5 kib [2.27 t]	HIDSB01-5K	HIDSB02-5K	8.12 [206.2]	4.06 [103.1]	1.44 [36.6]	1.12 [28.4]	.62 [15.7]	6.87 [174.5]	.62 [15.7]	.65 [16.5]	1.75 [44.4]	2.25 [57.2]	1.48 [37.6]	.50 [12.7]	5.24 [133.1]
10 kib [4.54 t]	HIDSB01-10K	HIDSB02-10K	8.126 [206.2]	4.06 [103.1]	1.44 [36.6]	1.12 [28.4]	.62 [15.7]	.87 [21.9]	.73 [18.5]	.66 [16.7]	1.95 [49.5]	1.95 [49.5]	1.49 [37.8]	.50 [12.7]	5.24 [133.1]
15 kib [6.8 t]	HIDSB01-15K	HIDSB02-15K	8.126 [206.2]	4.06 [103.1]	1.44 [36.6]	1.12 [28.4]	.62 [15.7]	.87 [21.9]	.73 [18.5]	.66 [16.7]	1.95 [49.5]	1.95 [49.5]	1.49 [37.8]	.50 [12.7]	5.24 [133.1]
20 kib [9.07 t]	HIDSB01-20K	HIDSB02-20K	8.126 [206.2]	4.06 [103.1]	1.44 [36.6]	1.12 [28.4]	.62 [15.7]	.87 [21.9]	.73 [18.5]	.66 [16.7]	1.95 [49.5]	1.95 [49.5]	1.49 [37.8]	.50 [12.7]	5.24 [133.1]
30 kib [13.61 t]	HIDSB01-30K	HIDSB02-30K	10.25 [260.4]	5.12 [130.2]	1.87 [47.5]	2.36 [59.9]	.88 [22.4]	8.50 [215.9]	1.00 [25.4]	1.06 [26.9]	3.00 [76.2]	3.25 [82.6]	2.75 [69.8]	1.00 [25.4]	6.51 [165.4]
40 kib [18.14 t]	HIDSB01-40K	HIDSB02-40K	11.25 [285.8]	5.62 [142.9]	1.87 [47.5]	2.50 [63.5]	.88 [22.4]	9.50 [241.3]	1.00 [25.4]	1.06 [26.9]	3.50 [88.9]	3.75 [95.2]	3.25 [82.6]	1.00 [25.4]	7.51 [190.8]
50 kib [22.68 t]	HIDSB01-50K	HIDSB02-50K	11.25 [285.8]	5.62 [142.9]	1.87 [47.5]	2.80 [71.1]	.88 [22.4]	9.50 [241.3]	.93 [23.6]	1.06 [26.9]	3.90 [99.1]	3.90 [99.1]	3.64 [92.5]	1.50 [38.1]	7.51 [190.8]
60 kib [27.22 t]	HIDSB01-60K	HIDSB02-60K	16.10 [408.9]	8.05 [204.5]	3.05 [77.5]	4.60 [116.8]	1.55 [39.4]	13.00 [330.3]	1.25 [31.7]	1.56 [39.6]	5.38 [136.6]	5.50 [139.7]	5.50 [139.7]	2.00 [50.8]	10.00 [254.0]